



The Element

— *by Anocha* —

Kamala - Phuket

*COMPUTER GENERATED IMAGE







The Element
— by Anocha —

ESCAPE TO QUIET ELEGANCE; BEACH, MOUNTAINS, COMMUNITY

Discover The Element, nestled in a prime and peaceful location in Kamala on Phuket's western coast. Here you will find stunning forested mountain views away from busy roads and yet just minutes from the beach, local shops and restaurants.

Kamala offers a perfect blend of natural beauty, tranquil living and modern comforts. Known for its pristine beach and stunning surrounding mountains, Kamala provides a lifestyle that is both relaxing and enriching.

Kamala Beach, with its soft white sand and crystal-clear waters, is ideal for morning walks and exercise, sunbathing, or simply a swim to start your day. Beyond the beach, you will feel at home in Kamala's vibrant, yet intimate community.

Surin, Laguna and Patong are all within easy reach and offer an abundance of complimentary activities.

But it's not just the location; it's the Lifestyle. The Element offers a select few the chance to enjoy premium amenities in a peaceful, secluded setting. With only 278 luxury units spread across four residential blocks, you'll experience privacy and exclusive facilities unlike any other.

The Element redefines what it means to experience luxury. Secure your own place in this tranquil paradise and join a select community that promises an elevated, active lifestyle.

*COMPUTER GENERATED IMAGE



WALTER FIN



The Element

— *by Anocha* —

LUXURY LIVING REDEFINED

Welcome to The Element by Anocha, where the art of luxury living is redefined. Located just minutes from Kamala Beach, this exclusive community for the privileged few features 278 meticulously designed units set amidst a tranquil environment, offering breathtaking mountain views.

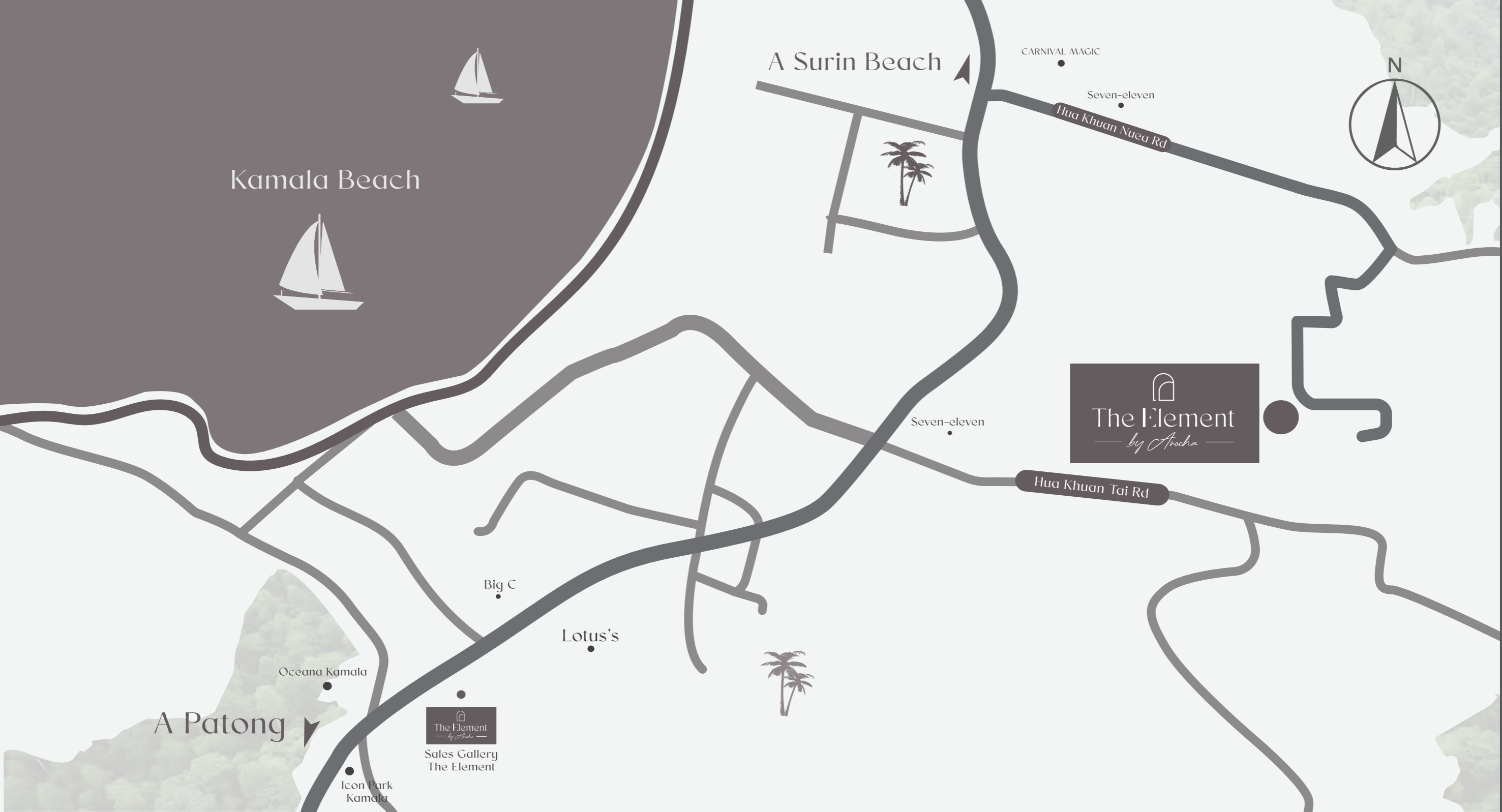
The Element introduces Kamala's most modern condo concept, with unit sizes ranging from stylish 29.87m² spaces to expansive 168.61m² penthouses complete with private pools all on over 12,240m² of prime natural land.

Exclusive to only a select few, the premium facilities are extraordinary and exciting. Enjoy double swimming pools set within lush, landscaped gardens that line each building, a state-of-the-art Muay Thai-themed gym, fitness centre, tennis court, sauna, business hub, marketplace shop with open plan kitchen facilities, a beauty salon with nail spa and more.

At The Element, experience the perfect blend of modern luxury and exclusive living within a community that offers unmatched amenities.

*COMPUTER GENERATED IMAGE





DEPARTMENT STORES & LIFESTYLE SHOPPING MALL

Villa Market Kamala	5 min
Big C Kamala	6 min
Porto De Phuket	17 min
Boat Avenue	17 min
Central Patong	20 min
Jungceylon Patong	20 min
Central Phuket	30 min

BEACHES

Kamala Beach	5 min
Patong Beach	18 min
Surin Beach	8 min
BangTao Beach	21 min
Layan Beach	30 min

LEISURE & LIFESTYLE

Laguna Golf Course	23 min
Catch Beach Club	14 min
Cafe Del Mar	4 min
Carnival Magic	4 min
Kayadee Wellness	5 min
Phuket International Airport	42 min
Royal Phuket Marina	33 min
Ao Po Grand Marina	45 min

INTERNATIONAL SCHOOL

Headstart International School	21 min
UWC Thailand International School	40 min
Finnway International School	30 min
British International School	35 min
Buds International School	45 min

HOSPITALS

Patong Hospital	21 min
Bangkok Hospital	40 min
Vachira Phuket Hospital	30 min
Thalang Hospital	35 min
Bumrungrad International Hospital (Up Coming)	45 min



Anocha Gym

GYM

FRESH FOOD

FRESH JUICE/WATER

*COMPUTER GENERATED IMAGE




The Element
by Anocha
Kamala - Phuket

MASTER PLAN

1st FLOOR PLAN



UNIT TYPE

- TYPE A : 1 BEDROOM 29.87 - 50.27 SQ.M.**
 - 29.87 ● 31.11 ● 42.30 ● 50.27
- TYPE B : 2 BEDROOM 49.83 - 57.25 SQ.M.**
 - 49.83 ● 57.25
- TYPE C : 1 BEDROOM PRIVATE POOL 74.15 - 92.61 SQ.M.**
 - 74.15 ● 92.61
- TYPE D : 2 BEDROOM PRIVATE POOL 124.74 SQ.M.**
 - 124.74
- TYPE E : MASTER PENTHOUSE PRIVATE POOL 168.61 SQ.M.**
 - 168.61

SUBJECT TO CHANGE WITHOUT PRIOR NOTICE

2nd - 6th FLOOR PLAN



UNIT TYPE

TYPE A : 1 BEDROOM 29.87 - 50.27 SQ.M.

- 29.87 ● 31.11 ● 42.30 ● 50.27

TYPE B : 2 BEDROOM 49.83 - 57.25 SQ.M.

- 49.83 ● 57.25

TYPE C : 1 BEDROOM PRIVATE POOL 74.15 - 92.61 SQ.M.

- 74.15 ● 92.61

TYPE D : 2 BEDROOM PRIVATE POOL 124.74 SQ.M.

- 124.74

TYPE E : MASTER PENTHOUSE PRIVATE POOL 168.61 SQ.M.

- 168.61

7th FLOOR PLAN



UNIT TYPE

TYPE A : 1 BEDROOM 29.87 - 50.27 SQ.M.

- 29.87 ● 31.11 ● 42.30 ● 50.27

TYPE B : 2 BEDROOM 49.83 - 57.25 SQ.M.

- 49.83 ● 57.25

TYPE C : 1 BEDROOM PRIVATE POOL 74.15 - 92.61 SQ.M.

- 74.15 ● 92.61

TYPE D : 2 BEDROOM PRIVATE POOL 124.74 SQ.M.

- 124.74

TYPE E : MASTER PENTHOUSE PRIVATE POOL 168.61 SQ.M.

- 168.61

SUBJECT TO CHANGE WITHOUT PRIOR NOTICE

*COMPUTER GENERATED IMAGE



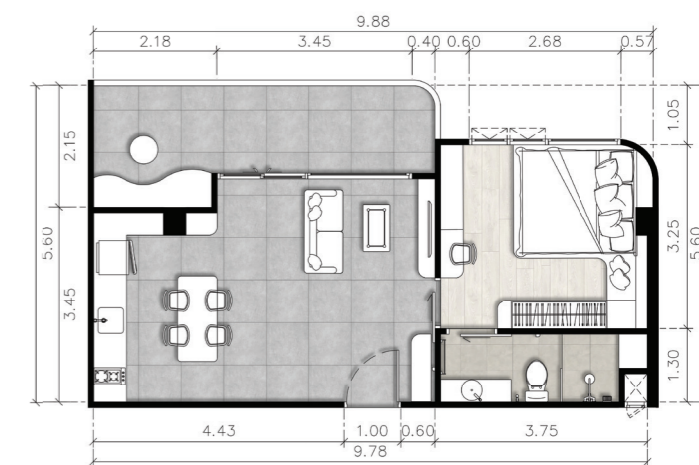
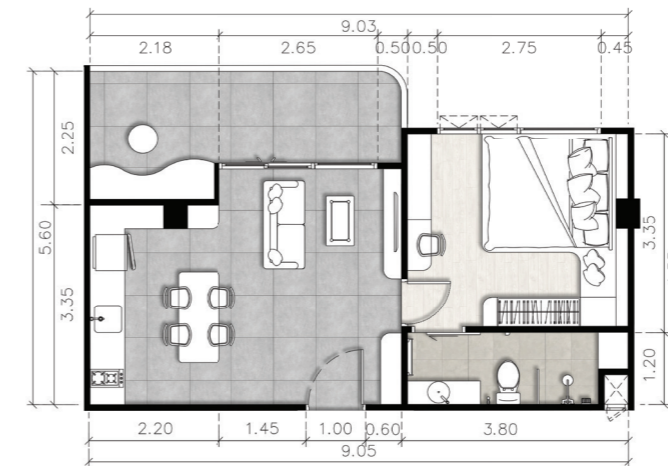
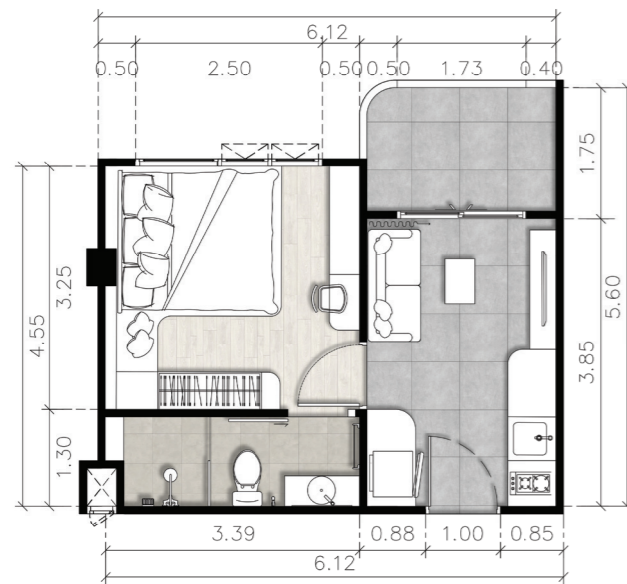
TYPE A

1-Bedroom

1-BEDROOM
1-BATHROOM
KITCHEN - LIVING
TERRACE



TYPE A 1-Bedroom



TYPE A1

BEDROOM	11.02	SQ.M.
BATHROOM	3.92	SQ.M.
KITCHEN - LIVING	10.79	SQ.M.
TERRACE	4.14	SQ.M.
TOTAL AREA	29.87	SQ.M.

TYPE A2

BEDROOM	12.18	SQ.M.
BATHROOM	4.41	SQ.M.
KITCHEN - LIVING	10.38	SQ.M.
TERRACE	4.14	SQ.M.
TOTAL AREA	31.11	SQ.M.

TYPE A3

BEDROOM	11.89	SQ.M.
BATHROOM	4.15	SQ.M.
KITCHEN - LIVING	16.94	SQ.M.
TERRACE	9.32	SQ.M.
TOTAL AREA	42.30	SQ.M.

TYPE A4

BEDROOM	11.78	SQ.M.
BATHROOM	4.07	SQ.M.
KITCHEN - LIVING-DINING	23.88	SQ.M.
TERRACE	10.54	SQ.M.
TOTAL AREA	50.27	SQ.M.

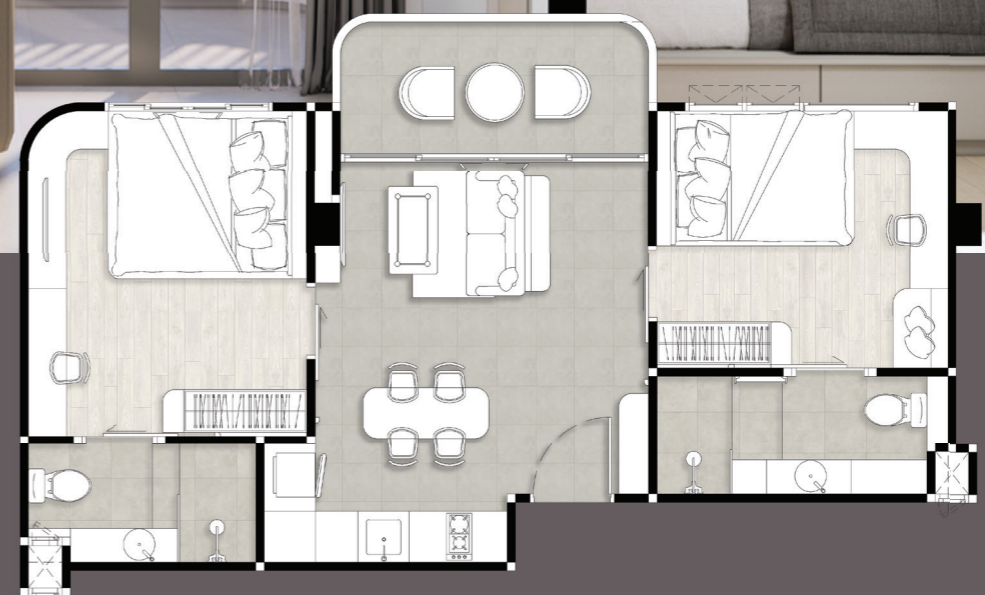
COMPUTER GENERATED IMAGE



TYPE B

2-Bedroom

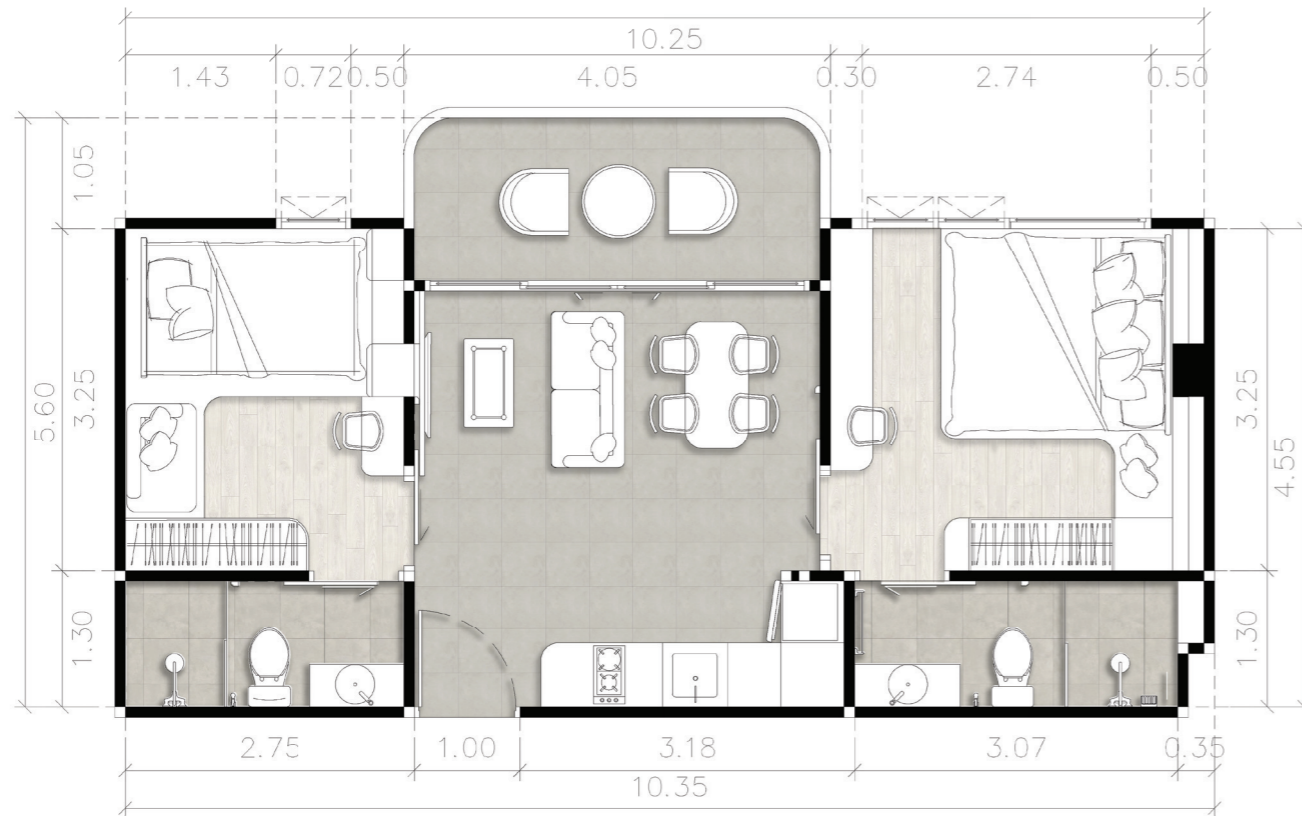
2-BEDROOM
2-BATHROOM
KITCHEN - LIVING
TERRACE



TYPE B

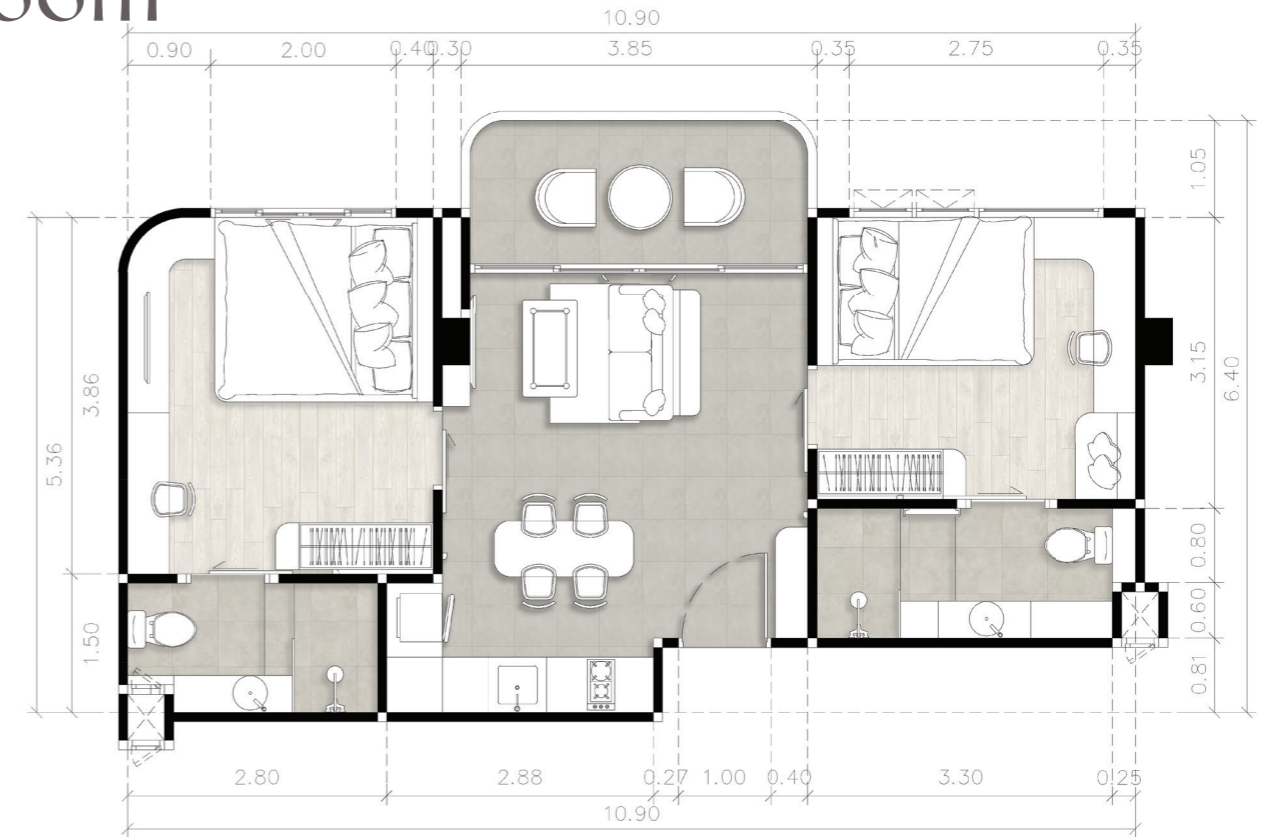
2-Bedroom

*COMPUTER GENERATED IMAGE



TYPE B1

BEDROOM 1	12.03 SQ.M.
BATHROOM 1	3.83 SQ.M.
BEDROOM 2	8.43 SQ.M.
BATHROOM 2	3.17 SQ.M.
KITCHEN-LIVING	16.78 SQ.M.
TERRACE	5.59 SQ.M.
TOTAL AREA	49.83 SQ.M.



TYPE B2

BEDROOM 1	12.64 SQ.M.
BATHROOM 1	3.63 SQ.M.
BEDROOM 2	10.52 SQ.M.
BATHROOM 2	4.67 SQ.M.
KITCHEN-LIVING	20.20 SQ.M.
TERRACE	5.59 SQ.M.
TOTAL AREA	57.25 SQ.M.

COMPUTER GENERATED IMAGE



TYPE C

1-Bedroom Private Pool

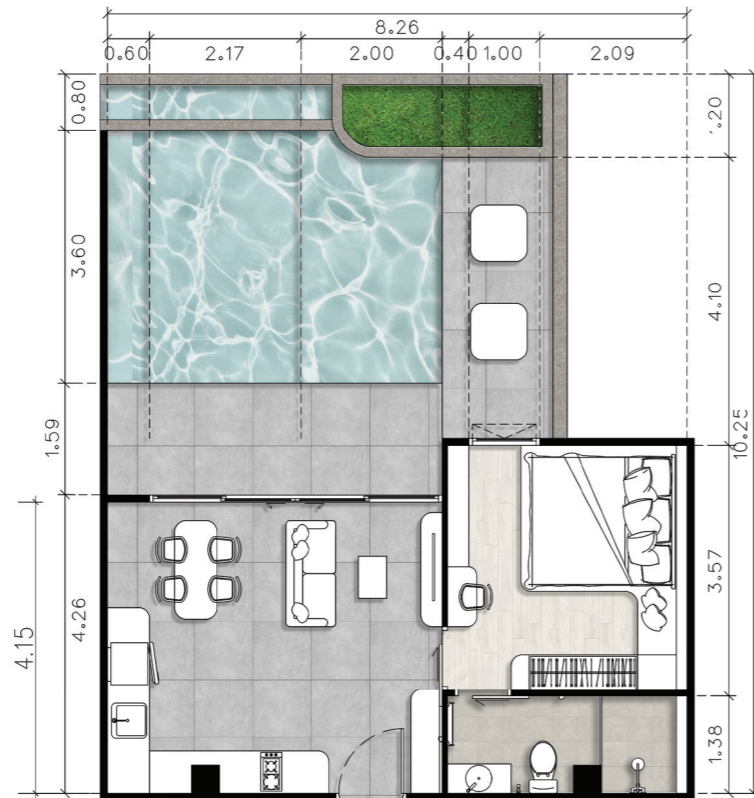
1-BEDROOM
1-BATHROOM
KITCHEN - LIVING
TERRACE
SWIMMING POOL



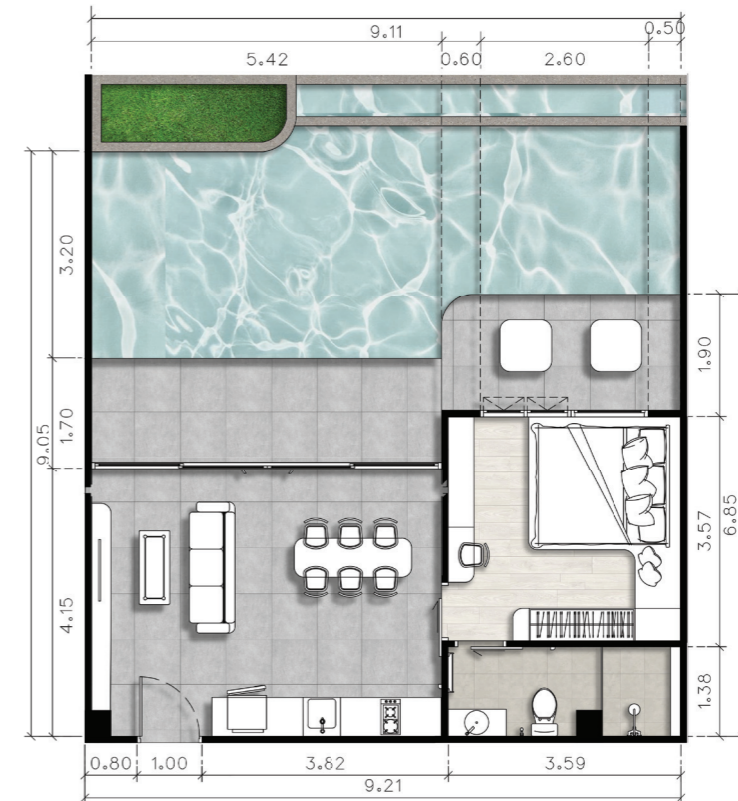
TYPE C

*COMPUTER GENERATED IMAGE

1-Bedroom Private Pool



BEDROOM	11.77	SQ.M.
BATHROOM	4.53	SQ.M.
KITCHEN - LIVING	27.25	SQ.M.
TERRACE	14.00	SQ.M.
POOL	16.60	SQ.M.
TOTAL AREA	74.15	SQ.M.



BEDROOM	12.63	SQ.M.
BATHROOM	4.80	SQ.M.
KITCHEN - LIVING	29.78	SQ.M.
POOL - TERRACE	45.40	SQ.M.
TOTAL AREA	92.61	SQ.M.

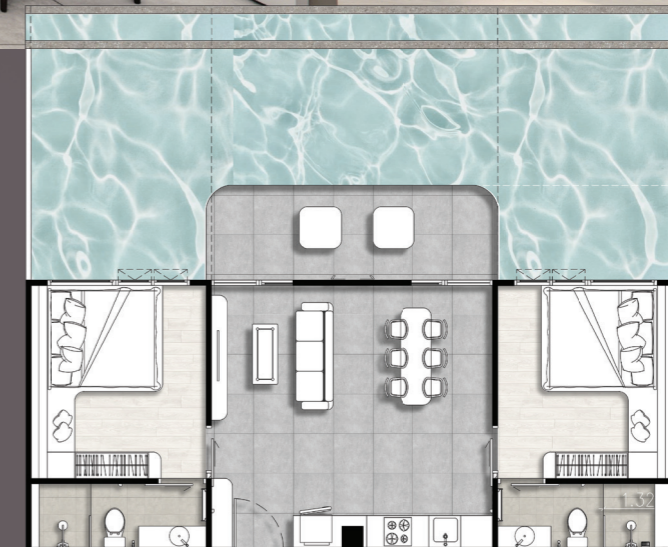
*COMPUTER GENERATED IMAGE

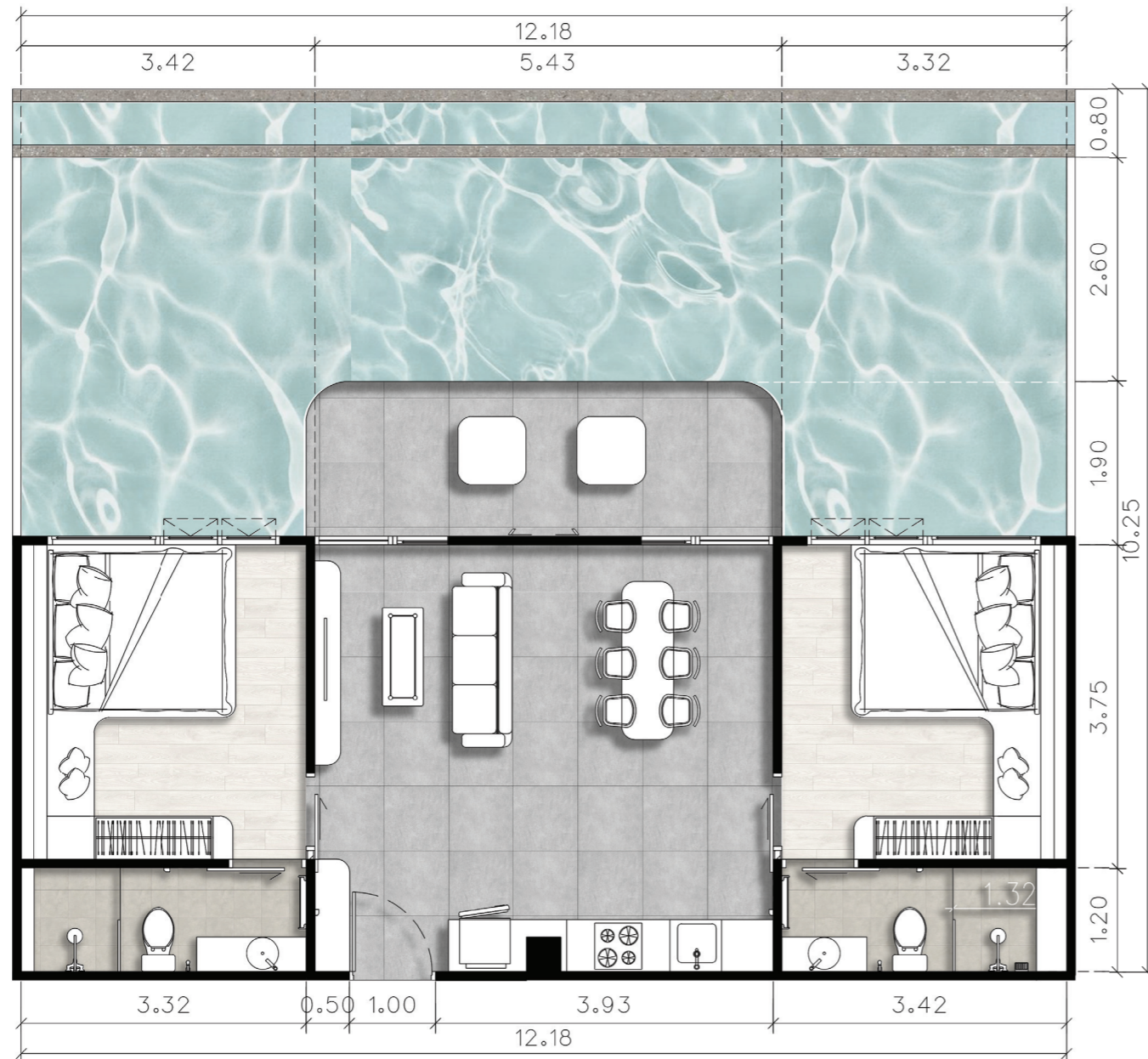


TYPE D

2-Bedroom Private Pool

2-BEDROOM
2-BATHROOM
KITCHEN - LIVING
TERRACE
SWIMMING POOL





TYPE D

2-Bedroom Private Pool

BEDROOM 1	12.21	SQ.M.
BATHROOM 1	3.95	SQ.M.
BEDROOM 2	12.21	SQ.M.
BATHROOM 2	3.98	SQ.M.
KITCHEN - LIVING	37.95	SQ.M.
POOL-TERRACE	54.44	SQ.M.
TOTAL AREA	124.74	SQ.M.

*COMPUTER GENERATED IMAGE



TYPE E

Master Penthouse Private Pool

2-BEDROOM
2-BATHROOM
KITCHEN - LIVING
TERRACE
SWIMMING POOL





TYPE E

Master Penthouse Private Pool

BEDROOM 1	10.68	SQ.M.
BATHROOM 1	4.86	SQ.M.
WALK IN CLOSET 1	7.80	SQ.M.
BEDROOM 2	11.84	SQ.M.
BATHROOM 2	5.58	SQ.M.
WALK IN CLOSET 2	9.43	SQ.M.
KITCHEN - LIVING	73.35	SQ.M.
WIND ROOM	5.58	SQ.M.
TERRACE	24.20	SQ.M.
SWIMMING POOL	15.29	SQ.M.

TOTAL AREA 168.61 SQ.M.

FACILITIES



*COMPUTER GENERATED IMAGE

*COMPUTER GENERATED IMAGE



MORE THAN A WORKOUT, ITS A LIFESTYLE

COMPUTER GENERATED IMAGE



MORE THAN A WORKOUT, ITS A LIFESTYLE

*COMPUTER GENERATED IMAGE



LUXURY LIVING WITH WELLNESS AND BEAUTY JUST STEPS AWAY

*COMPUTER GENERATED IMAGE



BALANCE LIFE AND WORK WITH EASE

PROJECT INFORMATION

Total Usable Area	12,242.50 SQ.M.
Total Units	278 Units
Location	Kamala, Phuket
Project Type	Low Rise Condominium 4 Buildings (7 Floors)

Unit Types

- Type A : 1 Bedroom
- Type B : 2 Bedroom
- Type C : 1 Bedroom with Private Pool
- Type D : 2 Bedroom with Private Pool
- Type E : 2 Bedroom Master PH with Private Pool



The Element

— by Anocha —



*COMPUTER GENERATED IMAGE



DEVELOPER



The Element

— by Anocha —

ANOCHA PROJECTS

- Pitak Home 1 Village - Completed
- Pitak Home 2 Village - Completed
- Pitak Home 3 Village - Completed
- Anocha Village - Completed
- Anocha Pool Villas - Completed
- Naravel Green - Completed
- The Cus Condominium - Under construction

PHUKET PLUS PROJECTS

- The Tree Residence - Completed
- Zen Space - Completed
- Icon Park - Completed
- Lake Town - Completed
- Oceana Condominium - Completed
- Palmyrah Surin - Completed
- Ocean Town Kata - Completed
- Prime Srisoonthorn - Under construction
- Prime Pano - Under construction

**7 PROJECTS
IN PHUKET
VALUE
1,400
MB.**





The Element

— *by Arocha* —

Kamala - Phuket

+66 81 539 8118 , +66 99 259 6525, +66 85 - 562 1146

www.theelementcondo.com